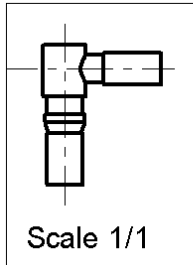
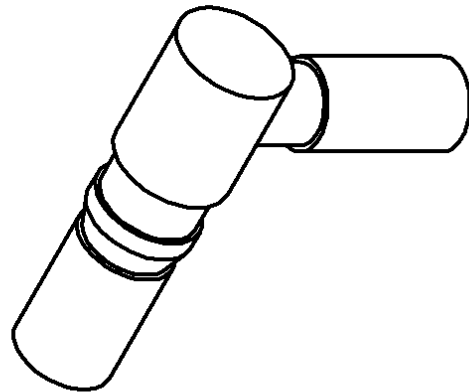
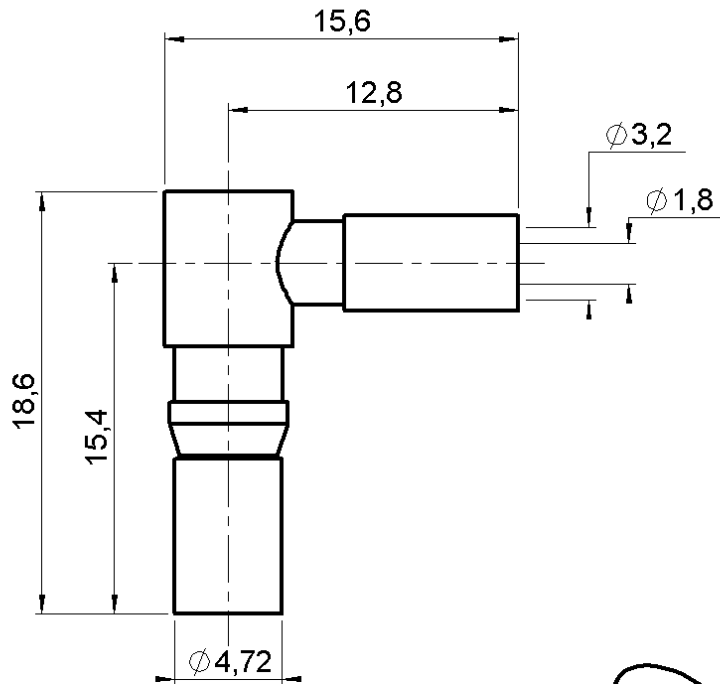


**RIGHT ANGLE PLUG CRIMP TYPE**

**R120.182.510**

**CABLE 2.6/50 S**

Series : DIN 41626



Scale 1/1

All dimensions are in mm.



COMPONENTS	MATERIALS	PLATINGS (µm)
BODY	BRASS	GOLD .
CENTER CONTACT	BRASS	GOLD .
OUTER CONTACT	BERYLLIUM COPPER	GOLD .
INSULATOR	PTFE	
GASKET	-	-
OTHERS PARTS	-	-
-	-	-
-	-	-

Issue : 0048 B

In the effort to improve our products, we reserve the right to make changes judged to be necessary.



**RIGHT ANGLE PLUG CRIMP TYPE**

**R120.182.510**

**CABLE 2.6/50 S**

Series : **DIN 41626**

**PACKAGING**

Standard	Unit	Other
<b>100</b>	<b>'W' option</b>	<b>Contact us</b>

**SPECIFICATION**

**ELECTRICAL CHARACTERISTICS**

Impedance		<b>50</b> Ω
Frequency		<b>0-2</b> GHz
VSWR	<b>1.10</b> +	<b>0.100</b> x F(GHz) Maxi
Insertion loss		<b>NA</b> √F(GHz) dB Maxi
RF leakage	- (	<b>NA-</b> - F(GHz)) dB Maxi
Voltage rating		<b>250</b> Veff Maxi
Dielectric withstanding voltage		<b>750</b> Veff mini
Insulation resistance		<b>1000</b> MΩ mini

**CABLE ASSEMBLY**

Stripping	a	b	c	d	e	f
mm	1.00	6.00	11.0	0.00	10.0	0.00

Assembly instruction :

Recommended cable(s)  
 KX 22A  
 RG 316  
 RG 188

Cable retention

- pull off **40** N mini  
 - torque **NA** N.cm

**MECHANICAL CHARACTERISTICS**

Center contact retention		
Axial force – Mating end	<b>10</b>	N mini
Axial force – Opposite end	<b>10</b>	N mini
Torque	<b>NA</b>	N.cm mini

**TOOLING**

Part Number	Description	Hexagon
.	.	.
R282.211.000	CRIMPING TOOL	3.25
R282.235.003	CRIMPING DIES	3.25
R282.293.000	CRIMPING TOOL	-

Recommended torque		
Mating	<b>NA</b>	N.cm
Panel nut	<b>NA</b>	N.cm
Clamp nut	<b>NA</b>	N.cm
A/F clamp nut	<b>0.000</b>	mm

Mating life	<b>500</b>	Cycles mini
Weight	<b>2.240</b>	g

**OTHERS CHARACTERISTICS**

-

**ENVIRONMENTAL**

Operating temperature	<b>-55/+125</b>	° C
Hermetic seal	<b>NA</b>	Atm.cm3/s
Panel leakage	<b>NA</b>	

Issue : **0048 B**

In the effort to improve our products, we reserve the right to make changes judged to be necessary.



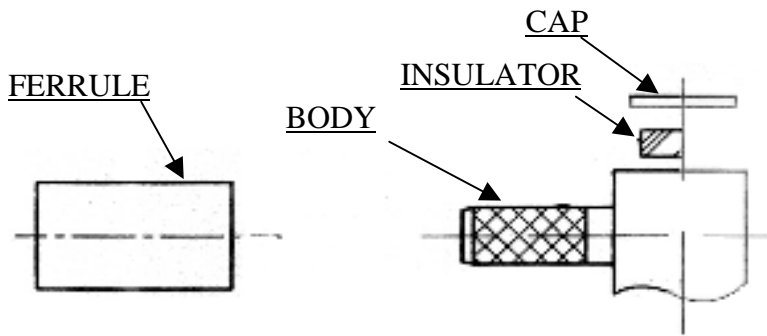
**RIGHT ANGLE PLUG CRIMP TYPE**

**R120.182.510**

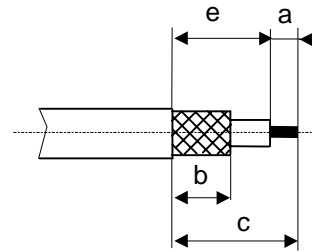
**CABLE 2.6/50 S**

Series : DIN 41626

**COMPONENTS**

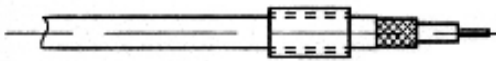


**STRIPPING DIMENSIONS**



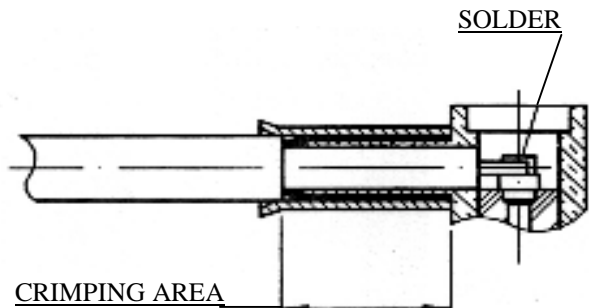
**1**

- Slide the ferrule onto the cable.
- Strip the cable .



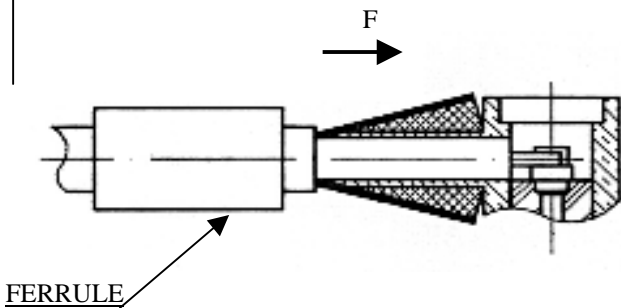
**3**

- Crimp the ferrule with crimping tool .
- Solder inner conductor.



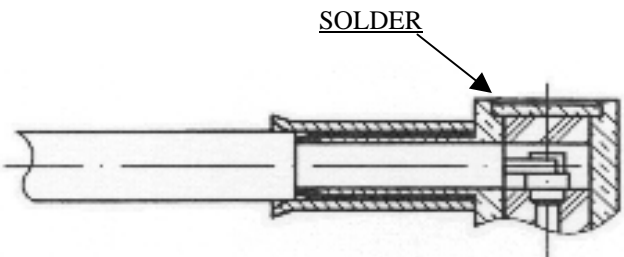
**2**

- Fan the braid.
- Push connector body under the braid.
- Slide the ferrule on the braid (in direction F)



**4**

- Place insulator into body.
- Place and solder the cap.



Issue : 0048 B

In the effort to improve our products, we reserve the right to make changes judged to be necessary.

